

**From:** [Berglund, Jeff](#)  
**To:** [Pat Deibert](#); [Jodi Bush](#); [Michael Thabault](#); [Matt Kales](#)  
**Subject:** Fwd: Sagebrush Focus Area (for now)  
**Date:** Wednesday, January 07, 2015 6:43:02 AM  
**Attachments:** [North Central Montana GRSG Preliminary Sagebrush Focus Areas Dec 2014 11x17.pdf](#)

---

Hi all - received this email while at another meeting yesterday afternoon and am looking for some guidance as to how to (and who should) respond. Any thoughts? Thanks!

Jeff

----- Forwarded message -----

**From:** **Miller, Ruth** <[ramiller@blm.gov](mailto:ramiller@blm.gov)>  
**Date:** Tue, Jan 6, 2015 at 3:21 PM  
**Subject:** Fwd: Sagebrush Focus Area (for now)  
**To:** Jeff Berglund <[jeff\\_berglund@fws.gov](mailto:jeff_berglund@fws.gov)>  
**Cc:** John Chaffin <[jchaffin@blm.gov](mailto:jchaffin@blm.gov)>

Hi Jeff,

John is out for the next 5 weeks and Jake and I are filling in, so I'm sorry if you've had some conversations on this topic already that we aren't up to speed on... but John has proposed these refined 'focus areas' and we were wondering if you had worked with him on this and are good with it; or, if you had any comments on this proposal (if you've not seen it already)? Thanks. Ruth.

---

**Ruth Miller**  
**Planning and Environmental Specialist**  
**Montana State Office**  
**406.896.5023 (desk)**  
**406.896.5293 (fax)**

----- Forwarded message -----

**From:** **Carlson, John** <[jccarlso@blm.gov](mailto:jccarlso@blm.gov)>  
**Date:** Tue, Dec 30, 2014 at 10:10 AM  
**Subject:** Sagebrush Focus Area (for now)  
**To:** "Brooks, Sandra S" <[ssleach@blm.gov](mailto:ssleach@blm.gov)>, Jamie Connell <[jconnell@blm.gov](mailto:jconnell@blm.gov)>, Stephanie Carman <[scarman@blm.gov](mailto:scarman@blm.gov)>  
**Cc:** Ruth Miller <[ramiller@blm.gov](mailto:ramiller@blm.gov)>, Jake Chaffin <[jchaffi@blm.gov](mailto:jchaffi@blm.gov)>, Randall Schardt <[rschardt@blm.gov](mailto:rschardt@blm.gov)>

Hello all,

Attached is a map for the BLM proposed Sagebrush Focus Area in MT.

This map was built using the FWS provided data layer from their mapping exercise with modifications based on BLM land parcel continuity, size and location to achieve an area that can better provide sage-grouse conservation certainty on BLM lands at a scale that matters to GRSG.

The parcels removed from the data provided as a starting point by the USFWS were generally peripheral, small and isolated parcels where changes in BLM management actions would not necessarily provide conservation gains to sage-grouse due to current and ongoing changes to

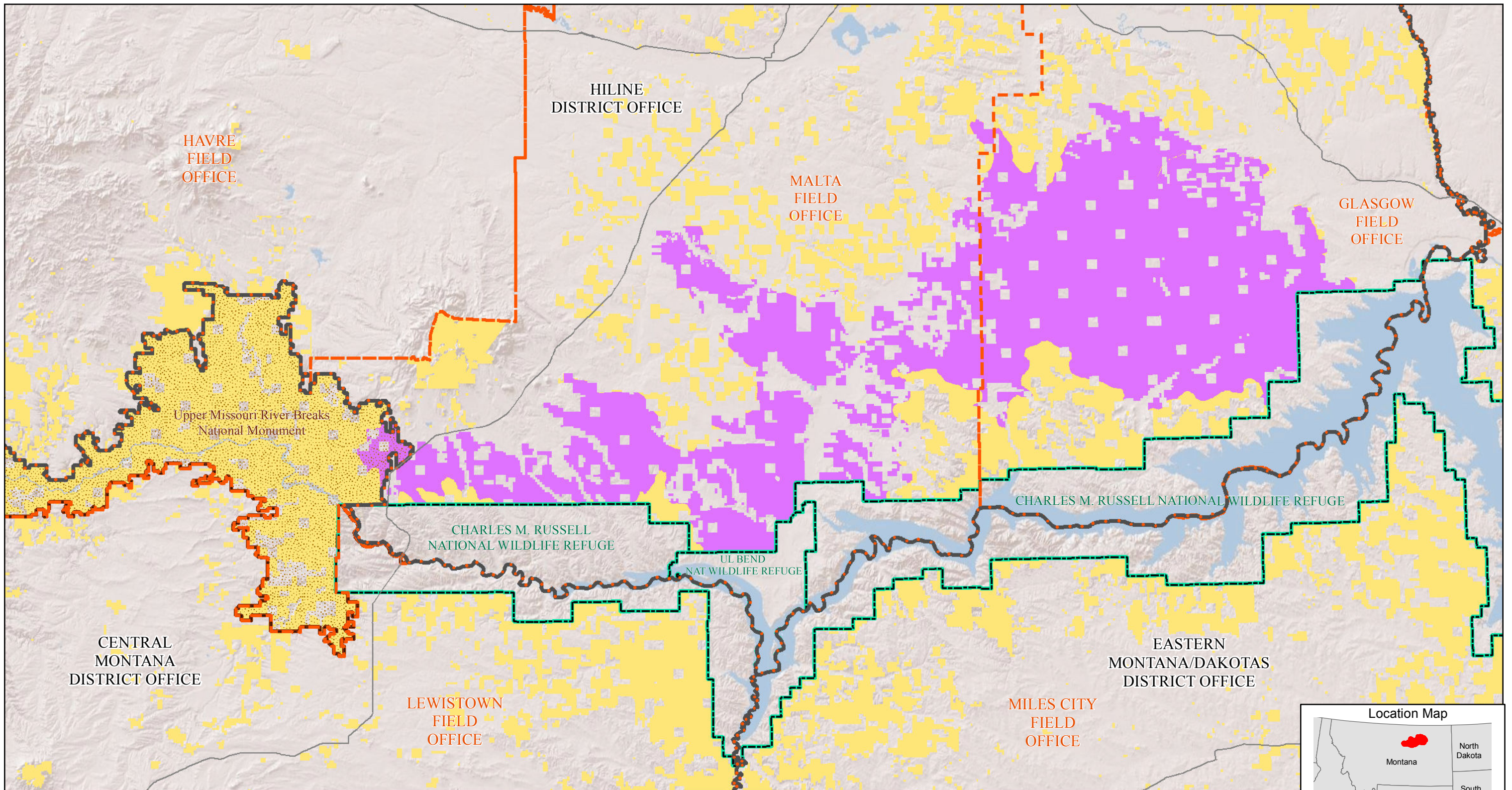
habitat on the interstitial lands (in particular the areas south of the Missouri River have high levels of current impairment from agricultural conversion and human disturbance (J. Smith pers. comm)). All are within PHMA already identified.

John C. Carlson  
Conservation Biologist  
Bureau of Land Management  
Montana/Dakotas State Office  
5001 Southgate Drive  
Billings, MT 59101-4669  
(406) 896-5024

--

Jeff Berglund  
Fish and Wildlife Biologist  
U.S. Fish and Wildlife Service  
Montana Field Office  
585 Shepard Way, Suite 1  
Helena, MT 59601  
(406) 449-5225, ext. 206



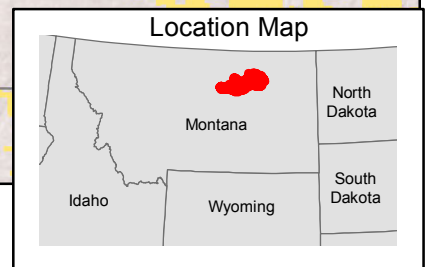
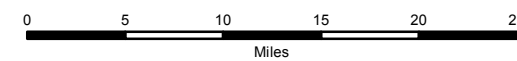


**North Central Montana  
Greater Sage-Grouse  
Preliminary Sagebrush  
Focus Areas  
BLM Managed Lands  
-December 2014-**

**Legend**

- Sagebrush Focus Areas
- BLM Managed Lands
- FWS Wildlife Refuge
- National Monument
- BLM District Office Boundary
- BLM Field Office Boundary

Data Sources:  
PPH: FINAL DRAFT: Developed by Montana Fish, Wildlife and Parks and reviewed by Montana BLM;  
PGH: FINAL DRAFT: Distribution of Sage-Grouse in North America. Schroeder et al., 2004.  
FWS AREAS OF SIGNIFICANCE: Data provided by FWS accompanying Memorandum FWS/AES/058711 (10/27/2014).



No warranty is made by the BLM as to the accuracy, reliability, or completeness of this data for individual use or aggregate use with other data.